



2020 Term 2 Week 1

Newsletter

Contact Us

St Bernadette's Parish School, Lalor Park

18 Wheeler Street (PO Box 4161)

Lalor Park, NSW 2147

Phone: 8869 6400

Email: stbernadetteslpark@parra.catholic.edu.au **Website:** www.stbernadetteslalorpark.catholic.edu.au

Parent Group Email: sbparentgroup@gmail.com **Canteen:** sbcanteen@gmail.com



Principal's Message

Welcome back to what will be a very different school term! I hope the holiday period, although unique, was safe and relaxing. Never before have I experienced Good Friday or Easter Sunday mass in isolation from my home. This was an experience I will remember, value and share forever. I could imagine celebrating mass from the comfort of your own home! I'm grateful that there was an opportunity to experience the Easter liturgical celebrations and encourage families to tap into social media to view mass from their homes. At this time a little bit of spiritual nourishment can go a very long way.

This term has a truly unique start. It's unimaginable that schools and the wider community would be in the state they are. And yet we are continuing to offer the best learning opportunities that we can. I am extremely proud of the school community, the teachers and staff, students, parents and carers who have all adapted.

Yesterday I was asked by a representative from CEDP to sum up our response at St Bernadette's. I used three words, consistency, accountability and collaboration. The staff have risen to meet the demands of the evolving education space. It is disappointing at times to hear ill informed members of the community criticise the education community. I can only speak for the staff at St Bernadette's but I know that they are working harder than ever before. They are not slackening off or 'baby sitting' as one of our politicians recently suggested. In this digital landscape our work demands have increased!

I would also like to acknowledge the fantastic work that students are doing from home with the support of family. I know how challenging this can be on an hourly basis! Yet many of you have risen to this challenge. I encourage you all to do the best that you can in these challenging times. Focus on reading, writing, maths and religion, everything else is a bonus! Thank you for all your support in these unprecedented times.

There are a lot of conflicting reports regarding student attendance at school. Weeks 1 and 2 are to remain as is with parents/ carers encouraged where possible to keep their children at home. We are devising a plan for weeks 3 and 4 that will see students invited to return to school one day a week. This is logistically challenging, but we hope to have a plan to families by the end of this week. If all goes to plan it is hoped that student attendance will increase throughout Term 2. This obviously depends on COVID-19 and Government advice.

Once again thank you for your ongoing support in these challenging times. If you require any assistance please make contact with the school office. We are always here to help!

Semester One Student Reports

During the holidays I have had many discussions with different CEDP staff to try to understand and plan a way forward in regards to Semester One Reports. I'm sure you all acknowledge that school has drastically changed since this medical crisis began and this has had huge impacts on teaching and learning specifically feedback, assessment and in some cases the amount of work completed by students.

What is clear at the moment is that Semester One Reports will be different to past reports. I'm not sure about the differences or even the time frame at this stage, but families should be aware that our normal reporting procedures would be extremely difficult to implement at this stage. More information will be communicated in the near future.

Learning Expectations and Contact with Parents

This term teachers will be continuing to provide opportunities for learning to occur from home. It is important to note that this is not an extension of the school holidays but a model of learning for the home setting. Activities will be given in each of the identified learning areas below. Activities will be shared in your child's Google Classroom. If you are unable to access this resource please contact the school as soon as possible. All work has been created with degrees of flexibility to make the learning as accessible as possible. When and how you choose to complete work should be organised within your home.

Please note this is the minimum core requirement we are asking of students at home.

	Maths	Literacy	Religious Education	Physical Activity
	15 Minutes Maths Games and 15 Minutes Problem Solving (In addition you may like to include your child in ordering the shopping, following recipes, board games, etc)	20 Minutes Reading Infants - with parent Primary - independent or with parent 20 Minutes Writing 20 Minutes Talking & Listening (e.g. giving & following directions, sharing a story, calling and talking to relatives/friends, etc - then sharing what they heard or talked about)	Prayer Before Meals Angelus RE Weekly task or Prayer journal entry	20 Minutes Whole Body Movement. This means getting up, active movement.
Weekly	Creative Arts	HSIE	Science & Technology	PDH
	30 Minutes Visual Arts or Music or Drama	30 Minutes working on an allocated project. See your Google Classroom	30 Minutes - Infants 45 Minutes - Primary See your Google Classroom	30 minutes of Well-Being activities (may be broken up into 5-10 minute sessions). Having a brain break, listening to quiet music, going for a walk, etc).

Your child's participation in the Google Classroom will be one way the school will monitor your child's ongoing engagement in learning whilst they are not at school. Teachers will be monitoring attendance in this area as it is also part of how we monitor student welfare.

Teachers and other staff members will continue to contact your family at least once a week to check in and see how you are going with the learning. These forms of contact are part of the school's responsibility to ensure students are continuing their education in this difficult time. Alternative forms of communication need to be set up if you are unable to be contacted by phone. If you require it, please contact the school so we can establish contact via email or another alternative. It is critically important that we are able to communicate with families throughout the week. This is part of our duty of care and child protection responsibilities. If we are unable to reach you for an extended period of time, further action as established through Child Protection policies and procedures will be undertaken.

If you require any further information or need any assistance, please do not hesitate to contact the school.

Library Floor

This week work has commenced on re-carpeting and remedying the subfloor of the library. This is major work with the library being emptied for the duration of the works.

It's fantastic that this work can be completed while student attendance is minimal. It is anticipated that tradesmen will be onsite for two weeks completing the necessary work and then school staff will need to reorganise the library.

This is exciting for the school community as our library floor was showing the signs of age.

Have a good week

Phill Kapitanow

Principal

Message from our REC

Dear Parents, Grandparents and Caregivers,

Welcome to Term 2!

In the school holidays we celebrated Easter in a different way. Despite the experience of our world's deepest darkness with covid-19, for me Easter Sunday reminded me of the remarkable miracle of the resurrected Lord. It enabled me to channel a starting point to energise new hope and look forward to receiving the Holy Spirit in life's many hidden blessings. I always believe that it is through these experiences that our Lord is connecting with us to empower and strengthen us. Thus, although this Easter was less filled with chocolate and big family celebrations my heart was full of love and hope for the world's next chapter of new life. This term let's all continue to hope for new beginnings.



Have a great week everyone and remember to be kind to yourselves.

With blessings,

Mrs Mabellynn Buenaventura. (REC)

Leader of Learning - Ms Stapley

PBS4L

Last term we shared a Distance Learning Matrix for your use at home. Details are on your child's/childrens' Google Classroom where you will also find an example reward system for your use. Our Distance Learning Behaviour Matrix



St Bernadette's Lalor Park Distance Learning Expectations & Behaviours Matrix At home we are...



Safe	Respectful	Responsible	Learners
<ul style="list-style-type: none"> Keep our body to ourselves (social distancing) In the right place at the right time Move/ walk around the house calmly & quietly Use equipment and resources for their intended use Wash our hands thoroughly. 	<ul style="list-style-type: none"> Listen well and speak politely Take care of the environment See a need and do something about it 	<ul style="list-style-type: none"> Look after our equipment Be accountable and accept consequences for our actions Follow adult instructions immediately Be prepared and organised 	<ul style="list-style-type: none"> Actively engage in online tasks Complete online lessons and tasks Do our personal best Use a Growth Mindset and ask for help when needed Use technology for learning

MINDFULNESS

On Google Classroom from this week you will also find daily Mindfulness sessions specific to each stage. At school, we have daily Mindfulness sessions in order to improve and support student wellbeing. You may enjoy doing these with your children! All stages follow the same Scope and Sequence which have different focuses every fortnight- this fortnight being Recognising Emotions. Students will not need to submit anything to Google Classroom for these sessions.



If you have any questions about these, please do not hesitate to contact me via the school office.

With thanks,

Suzie Stapley

Uniform Shop

The School Locker Uniform Shop is closed on site until further notice. You can still visit the School Locker website and place on line orders. You have the option of having the order posted to you or collecting from the School Office.



<https://theschoollocker.com.au/>

Visit our photo gallery
on our website.



Attendance

Thank you to all of those parents who responded to the sms message yesterday explaining their child/childrens absence for Week 1 and Week 2. You will no longer receive text messages each day.

Can we remind all families if you intend to keep your child/children at home for Week 1 and Week 2 please return the text to say, ' My child will not be attending school for weeks 1 and 2 due to Covid 19'. You will no longer receive text messages daily for Week 1 and Week 2.

If you intend your child/children to attend some of the days for Week 1 and Week 2 you will need to return a text daily when it is sent to you with an explanation such as,

'Not attending due to Covid-19'.

This system will be in place for Week 1 and Week 2 only.

We will communicate what Week 3 and 4 will look like at school once this is fully organised.

If you have any questions please contact the school office.

Thank you.



Messages to all of our families from each Stage Group.

A Message From Early Stage 1

Hello Parents!

Welcome back to Term 2! We hope you have all had a restful and safe holiday break! We have been blown away by the work that has been submitted by Kindy last term and can't wait to see the learning that is occurring at home this term!

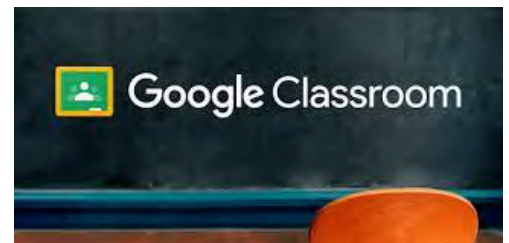
This Term we are posting our activities weekly for each of the students to complete. We have also placed all of our English and Maths learning onto one powerpoint presentation! We understand that this will be a little bit different, but we hope it provides you and your child with more of an understanding of what the task is they need to complete, and what skills they will need to complete it successfully. We would love your feedback on this!

Don't forget that on the ES1 Google Classroom, we also have an "ES1 Weekly Newsletter" with information and tips on how to get through the week, so please take the time to read it. We miss our kindy kids very much and look forward to seeing them all in the near future! We hope you have a great week and know that the teachers appreciate everything you are doing to help engage your child in their education!



Message from Stage 1

Welcome to Term 2! We hope you had a relaxing break, spending time with family. For now, students will continue to access online learning via Google Classroom. To support your child's learning at home, we have designed a suggested timetable schedule that can be found in our Stage 1 Google classroom. This timetable is similar to the timetable that students followed at the end of Term 1. We understand the challenges of remote learning for many families, please use our timetable as a guide and adapt it to best suit your family. A minimum of 60 minutes of learning time for Literacy and 30 minutes in Numeracy every day is advised.



Please remember to return your home readers back to school once you have finished reading them so they can be changed. If you have not picked up your home readers yet, they are available for collection at the office. We also have Maths packs for each student. These packs are now available to be collected from the front office.

We thank you for your continued support and understanding as we go through this time together. Be kind to yourself, and stay safe! Stage 1 Teachers

To any parents whose students participate in the Early Years or Middle Years EMU programs, you would have received an invitation to the Extending Mathematical Understanding google classroom. In order to better support your child whilst learning from home, we ask that you check into the page and engage in the activities assigned to your child. If you require any support with this, please contact the school and we will endeavour to support you where we can.

Regards Mr Simon Crothers and Ms Simone Ninness.

Message from Stage 2

What a different kind of holiday we just had. Our breaks were most likely very similar to each other. Quiet and lots of time with family. Although it wasn't what we are used to, we are hoping you spent time with your family, time we will wish for again down the track.



Term 2 will begin like we ended Term 1, using our online platform Google Classroom. We hope you all had time to relax and be creative during the holidays. We ask that you continue completing your work online and submitting it by the end of the week. We would like to thank everyone again for their efforts, patience and hard work last term. Parents, you are doing an incredibly amazing job. Hang in there everybody, we are almost there!

Stay safe,

Stage 2 Teachers

To any parents whose students participate in the Early Years or Middle Years EMU programs, you would have received an invitation to the Extending Mathematical Understanding google classroom. In order to better support your child whilst learning from home, we ask that you check into the page and engage in the activities assigned to your child. If you require any support with this, please contact the school and we will endeavour to support you where we can.

Regards Mr Simon Crothers and Ms Simone Ninness.

Message from Stage 3

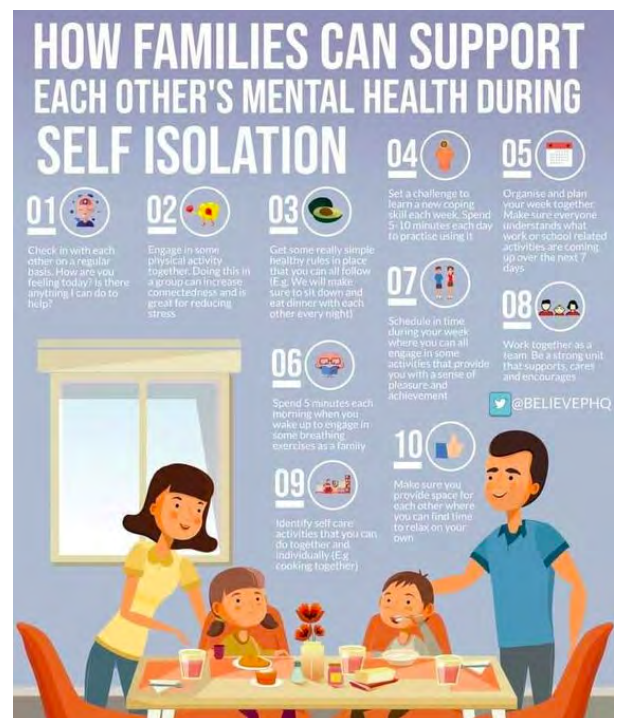
Welcome back Stage 3! We know it would have been a very different break than usual, but we hope you were still able to rest and spend quality time with your family.

We're looking forward to another term of great learning and achievements! Keep up the great work online, but make sure you're taking breaks, going outside and looking after yourselves! You can also contact us if you need anything or have any questions.

We miss seeing your smiling faces! By the way, here are some wellbeing activities that you can do at home.

Thank you parents for your ongoing support during this time.

Stage 3 Teachers



<https://www.vigo.hants.sch.uk/emotional-wellbeing-activities/>

Literacy News with Mrs Maher

Welcome to Term 2!

I hope that everyone is well rested from homeschooling and online learning, ready for another exciting term of working in partnership with teachers. I'd like to thank you all for the interest and support you have given the teachers and your children in working together in this new way.

All students have access to Literacy learning through Google Classroom. We urge you to contact the school if your child is unable to access the learning. We are more than willing to assist you and your children access the learning. It is important that all students continue their learning online. If students are attending school, they will be working online also. The students are learning excellent skills whilst working online and whilst it has been a steep learning curve for parents, students and teachers, these are skills that will benefit your child's ongoing learning in the future.

Some students who work with Ms Ninness or myself have some literacy learning set up on Google Classroom from us. If your child is having trouble accessing this, please contact us through the school.

The Catholic Education Office Parramatta has now bought a subscription of PM readers online for all students from Kindergarten to Year 2 and for students on levelled readers in Stage 2 and 3. We will be sending correspondence home for this when the subscription has been set up over the next week. This subscription will give your child access to hundreds of fiction and non-fiction levelled texts. The students will be able to read the texts and have the texts read to them. The teachers will be able to keep track of books the students are reading and who is accessing the reading. Students need to read each day for at least twenty minutes.

Once this subscription has been set up, it will take the place of books being sent home to students.

Please continue to read and write with your children everyday. Reading and writing can include reading and writing recipes, shopping lists, letters to relatives and friends, diaries, creative stories, poems etc.

Students in years 3 - 6 can pick up a copy of The School Magazine which our school subscribes to. Copies of these are in the front office at school. Teachers have set up home readers in the front office for you to pick for your children to read.

Thanking you all for your continued support in working with your children.

Lorraine Maher

Literacy and Diversity Leader.

EMU Students



To any parents whose students participate in the Early Years or Middle Years EMU programs, you would have received an invitation to the Extending Mathematical Understanding google classroom. In order to better support your child whilst learning from home, we ask that you check into the page and engage in the activities assigned to your child. If you require any support with this, please contact the school and we will endeavour to support you where we can.

Regards

Mr Simon Crothers and Ms Simone Ninness.

News From the Library

National Simultaneous Storytime - Save the Date!



National Simultaneous Storytime (NSS) is back for its 20th year! NSS will be taking place on Wednesday 27 May 2020 at 11:00am. Every year a picture book that is written and illustrated by an Australian author and illustrator, is chosen to be read simultaneously in schools, libraries, bookshops and homes across the country. The book that has been chosen this year is 'Whitney and Britney Chicken Divas' by Lucinda Gifford. More information about National Simultaneous Storytime will be in next week's newsletter.

Premier's Reading Challenge 2020: Important update, April 15 2020.

There have been important updates to the 2020 PRC Challenge rules to help all students meet the Challenge requirements this year. Please see the Rules page for more information on these amendments. <https://online.det.nsw.edu.au/prc/home.html>

Key changes include:

- All students will be able to include 10 choice books on their 2020 Student reading records. Please refer to the website for the support article for information on adding bonus choice books.
- All students will be able to include books read as part of collaborative reading with teachers or parents/ carers, either in person or online.
- Students who do not complete the Challenge in 2020 will not be disadvantaged from achieving cumulative PRC awards in the future.

Congratulations to Domenic G (Stage 3) who has completed the Premier's Reading Challenge for 2020.

E-Books and Audio Books

All students at St. Bernadette's are able to borrow e-books and audio books.

Go to <http://classm8.parra.catholic.edu.au/> and click on e-library. Log in again and click on Library. Follow the links to student e-books.

- Use **ACEN Overdrive** for audiobooks and ebooks.
- Use **Wheelers** for ebooks

Please see the attached user guide in previous newsletters for more information.

E-books can also be accessed through Blacktown City Council Library.

CEDP Libraries Helpsite

The following link is a helpful resource for parents and students about digital resources, e-books and cyber safety.

<https://sites.google.com/parra.catholic.edu.au/cedplibraries/home>

Please email the school email if you have any questions. This email will be forwarded on to me and I will endeavour to respond as soon as possible.

Thank you, Mrs Monique O'Brien

News from the Science/Indonesian/PDHealth Team

Welcome back to Term 2 from the Science/Indonesian/PDHealth Team! We have some great new learning tasks that we will post on Google Classroom each week.

Science - This term, students at St Bernadette's will be working on the Science strand, "Earth and Space Science". In this strand the students learn about the Earth's structure and its place in the universe. They will explore changes to the Earth surface and the ways in which natural processes and human interactions impact on the Earth and its resources.

Early Stage 1 Science Unit- "Weather in our World" - Students will be learning about daily and seasonal changes in the environment.

Stage 1 Science Unit- "Water Works" - Students will be learning about the observable changes that occur in the sky and landscape, with focus on the Earth's resource of water.

Stage 2 Science Unit- "Beneath our Feet"- Students will be learning about how natural processes and human actions change the Earth's surface over time.

Stage 3 Science Unit - "Creators and Destroyers" - Students will be learning about major geological events such as earthquakes, landslides and tsunamis and how these change the Earth's surface.

PD/Health - This term from Weeks 1 - 5, we will be working from the Health, Wellbeing and Relationships strand. Students will learn the knowledge and skills to build respectful relationships with others and enhance their own personal strengths. They will explore ways to enhance the health, wellbeing and safety of themselves and others.

Indonesian - In Term 2, Indonesian lessons will take place from Week 6 to Week 10.

Thanks for your ongoing cooperation,

The Science/Indonesian/PDHealth Team

Mrs Monique O'Brien, Mrs Kerrie-Ann Galea, Mrs Mariquita Park



St Bernadette's Garden

Bluey's Patch is looking forward to students being ... **In the Garden!**



In the garden,
Pull the weeds.
Dig a hole,
Plant the seeds.
Cover them up.
Water them too.
Watch them grow,
In front of you!
Make sure they sprout,
Get lots of sun.
To grow a plant,
Is tons of fun.



More Photos



To be part of the learning and fun make contact via: claresgarden118@gmail.com and visit <http://kitchengardensinschools.blogspot.com> or the school office on

8869 6400 or stbernadetteslpark@parra.catholic.edu.au Please see our website www.stbernadetteslalorpark.parra.catholic.edu.au for more photos from the garden



We're here for you, as you're here for us.

Welcome back to everyone after a well-deserved term break. Whether you're learning from home, or here at school, we look forward to a new and improved Term 2. We thank you for all your continued support and patience through these challenging times.

We understand Outside School Hours Care is vital for many parents that are not able to work from home, so that you can continue to provide essential work for the nation. Our OSHC service is open and operating for those that need our care, and will provide your children with much-needed familiarity and continuity through our engaging programs that have an increased focus on hygiene and social distancing. We offer a safe environment at your school for children to get active, try new things, connect with friends and relax.

As per the recent State Government advice, from the start of Term 2 the majority of NSW students will be learning from home. This means our service is open to all children of parents who cannot work from home, vulnerable children, or children that are not able to be supervised at home on certain days and no other arrangements can be made. For these families, childcare will be provided free of charge until 30th June as per the Federal Government's announcement on the 2nd April.

Whilst care is free, we still need to know if you are coming. We ask that you get your bookings in as soon as you can, so that we can staff and resource the service appropriately, to best care for your children.



It's **FREE** to Register. (and if you want to use OSHC, you first need to register).

Register at pp.campastralia.com.au/account/login. Once registered, it's easy to make and manage your bookings online via our Parent Portal.

Visit our [blog for helpful information and fun activities](#).

New articles are added each week for parents and cover various topics to help families. This month we are focusing on all things COVID-19. We talk about how to adjust to the changes you've made in your household, including fun activity ideas to entertain your child at home.

Visit the blog here: <https://campastralia.com.au/blog>

www.campastralia.com.au



St Bernadette's Parish, Lalor Park

Parish Priest:	Fr Andrew Robinson	Secretary:	Mrs Bev Baxter
Office Hours:	Tues, Thurs & Fri 9am to 4pm	Telephone:	9672 4037
Email:	admin@stbernadetteslalorpark.org.au	Fax:	9671 5377
Web Page:	www.stbernadetteslalorpark.org.au		